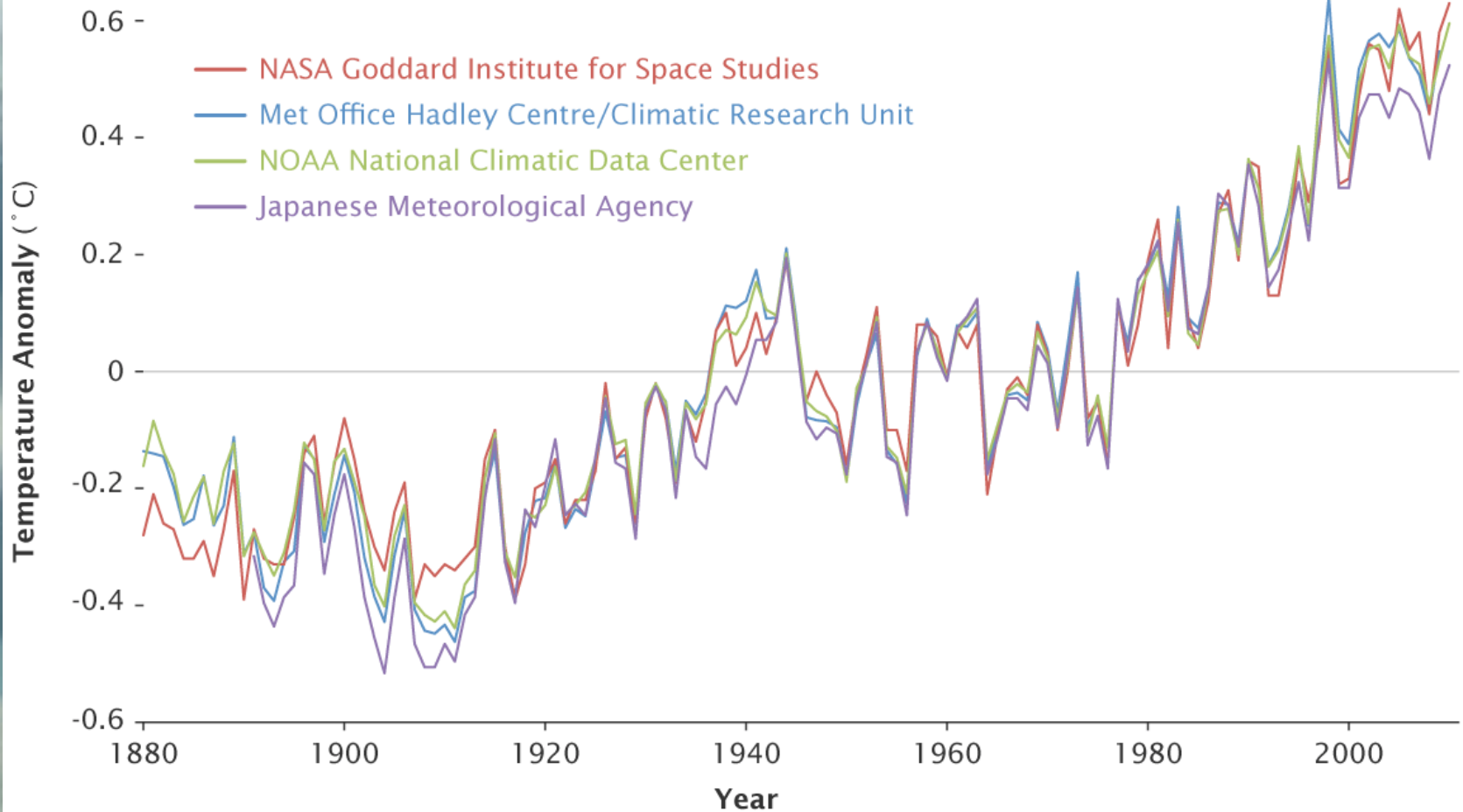


Global Surface Temperatures

Four independent records show nearly identical long-term warming trends.



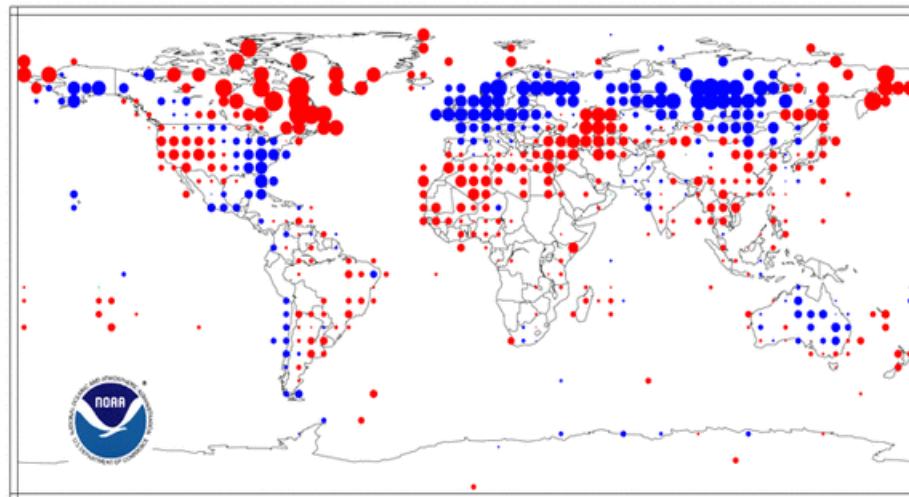
Credit: NASA Earth Observatory/Robert Simmon

Data Sources: NASA Goddard Institute for Space Studies, NOAA National Climatic Data Center, Met Office Hadley Centre/Climatic Research Unit, and the Japanese Meteorological Agency.

Temperature Anomalies December 2010

(with respect to a 1961-1990 base period)

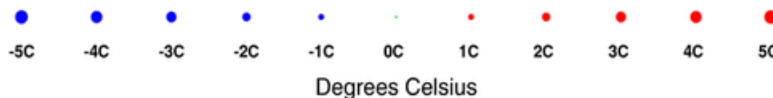
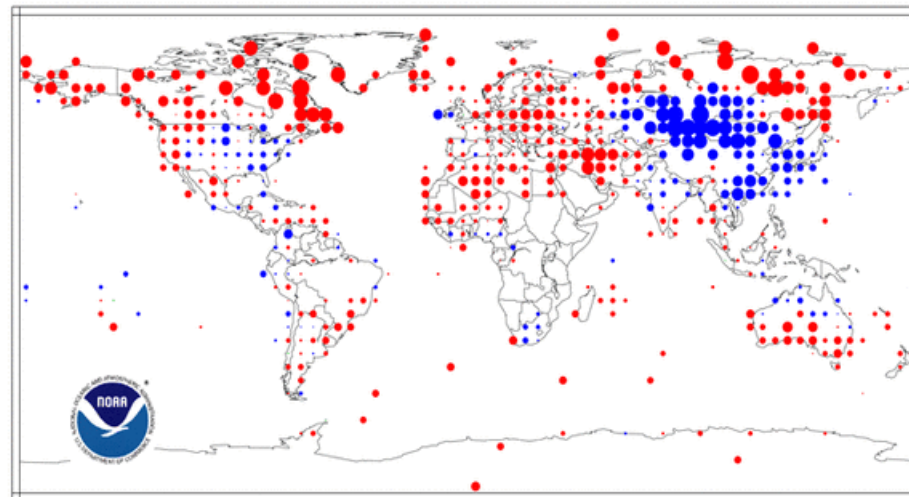
National Climatic Data Center/NESDIS/NOAA



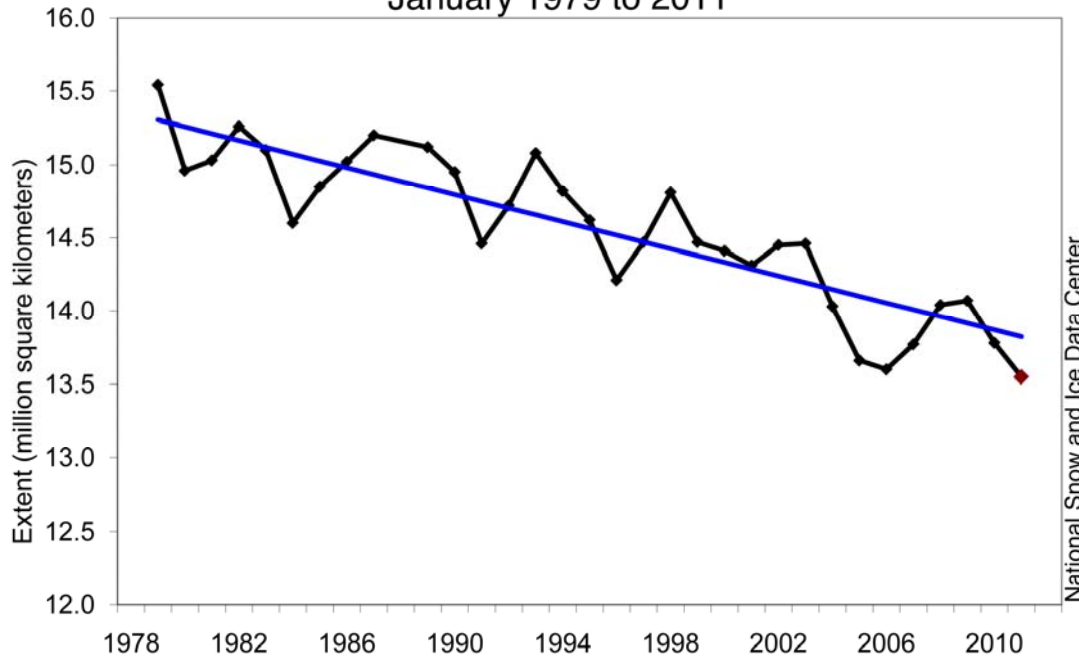
Temperature Anomalies January 2011

(with respect to a 1961-1990 base period)

National Climatic Data Center/NESDIS/NOAA



Average Monthly Arctic Sea Ice Extent January 1979 to 2011

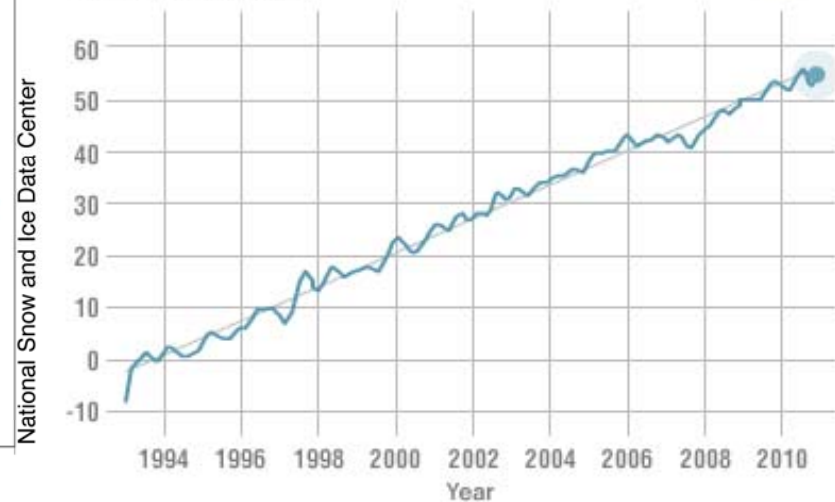


SATELLITE DATA: 1993-PRESENT RATE OF CHANGE

Data source: Satellite sea level observations.

Credit: [CLS/Cnes/Legos](#)

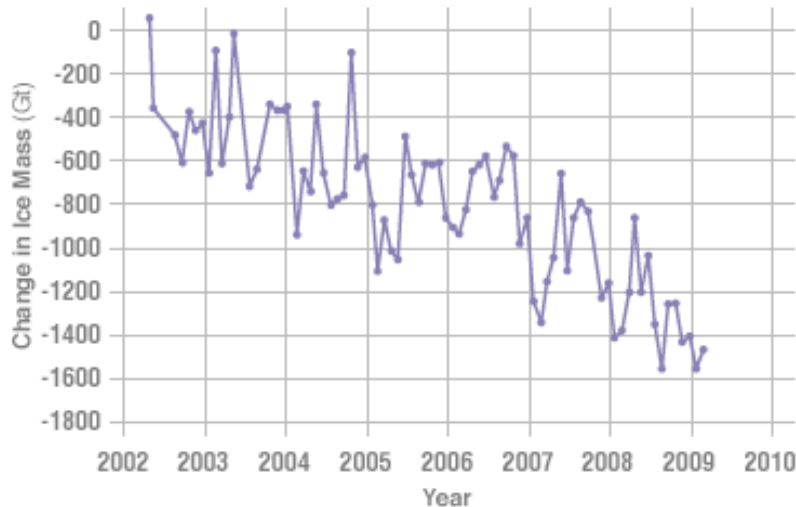
↑ **3.27** mm per yr*



ANTARCTICA MASS VARIATION SINCE 2002

Data source: Ice mass measurement by NASA's Grace satellites.

Credit: [NASA/University of California, Irvine](#)



GREENLAND MASS VARIATION SINCE 2002

Data source: Ice mass measurement by NASA's Grace satellites.

Credit: [NASA/University of California, Irvine](#)

